

Mixed Media Textile Art Collage ^a

workshop with

April Sproule

SPROULE STUDIOS



paint and stitch

WORKSHOPS

Studio: (707) 725-9124

E-mail: aprilsp@sproulestudios.com

Student's Supply List

[Pre-Workshop Prep Video Link](#)

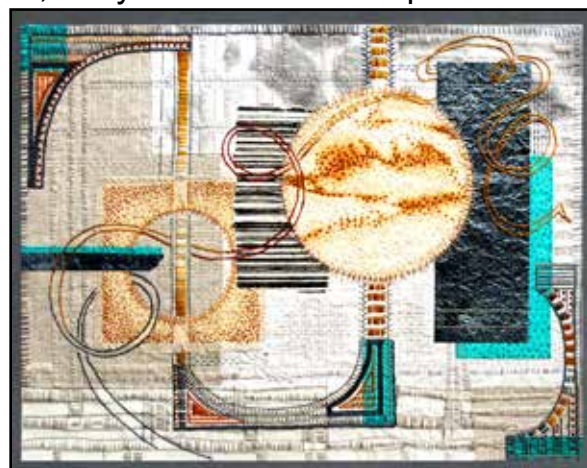
Be sure to watch this short video!

For the two day version of this workshop, most of the first day to play with mark making on fabric and paper using an assortment of inks and some paints. By the afternoon you'll be ready to start work on the composition of your piece.

The second day will be spent on color, design, and stitching options for your collage piece. The recommended finished size for the collage is 14" x 18", but you are free to adapt the size to your design.

Supplies Included with the Class Supply Fee:

- \$20.00 payable in class
- Japanese Rice Paper, 15 sheets per person, 9" x 12"
- Assorted inks, paints, and mark making items
- Parchment for stitch design development



I. Supplies: Items you need to bring

1. Fabrics:

Cottons, silks, and linens are suitable for this project.

Vintage fabrics and repurposed fabrics from clothing are great. Prewashing is recommended when possible.

a. **Fabric for Background:** the finished size of your piece is: **14" x 18"** (unless you want to make a larger piece) Don't cut anything before class. You will piece this in class.

b. Fabrics for surface design, mark making, and painting: light to medium colored fabrics work best.

c. Bring some additional fabric you love as well.

When choosing fabrics, you want your stitching to show up in most areas. Solid fabrics work great, but so do some stripes or feature fabrics with motifs.

2. Stabilizer, Optional, but highly recommended:

- **1 yard of silk organza, unwashed.** This is used as a leave-in stabilizer to build your collage piece on.

You can buy 42" wide whitesilk organza at: [Dharma Trading Company Link](#) **Do not wash the silk organza.**

3. Other Papers for Collage:

- **Optional**, larger pieces of Japanese paper, or other types for mark making
- old book pages, gelli plate or hand printed papers, any other ephemera

For papers used in your actual piece, you don't want paper as heavy as card stock or as thin as tissue paper, but somewhere in between. You want to be able to hand stitch through the paper, but you don't want it falling apart before you are done with your piece.

4. Embroidery Floss, assorted colors to go with your color scheme

- a. DMC Cotton Embroidery Floss and Perle Cotton are what I use.
- b. Regular sewing thread, assorted colors for basting and appliquing down your shapes.

5. Block Printing:

Bring your own blocks or stamps, and I'll bring inkpads for use on paper and fabric.

II. Tools:

1. Hand embroidery needles:

- Embroidery sharps, assorted packs that are sizes 5/10 work best.
- Recommended brands: Bohin, John James, or Mary Arden(my favorite)



2. Fabric marking tools: I use these, but you are welcome to use what you prefer.

- Stabilo white pencil #8052, water erasable marker (from me or art supply stores)
- Frixion Pens # 31557, set of 3 colors (Amazon, or office supply stores) heat-erasable
- Fine-grit sandpaper, 1 sheet, an artist's color wheel

3. Basic Sewing Kit includes:

- Sharp small scissors for embroidery, and scissors for cutting through freezer paper.
- Straight pins, regular hand sewing needles, regular sewing thread for basting, and bees-wax for your thread.
- Blue painter's tape (3/4" width is fine, or whatever you have)
- Ruler, rotary cutter, and small cutting mat

4. Painting, Mark Making

- A couple of glass or plastic containers for water
- Inexpensive assorted brushes, sea sponges, fabric markers,
- sumi ink, or whatever you have on hand.



Please feel free to contact me if you have any questions, and check out my website for more examples.

April Sproule

E-mail: aprilsp@sroulestudios.com
Website: www.sroulestudios.com
Phone: (707) 725-9124